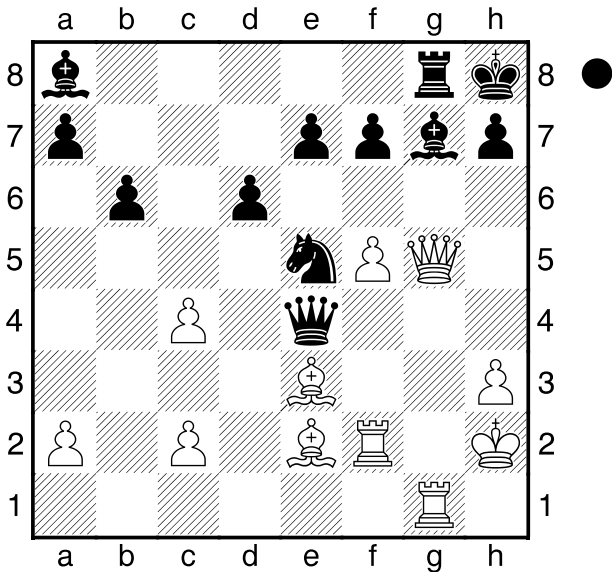
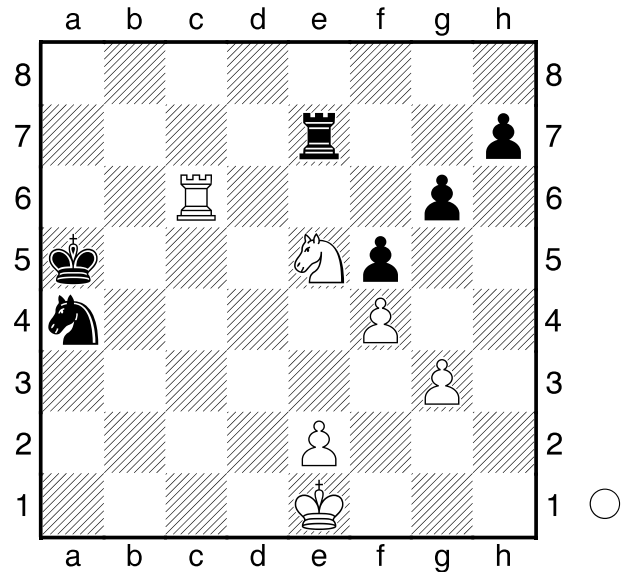


□ Ravinsky  
 ■ Simagin



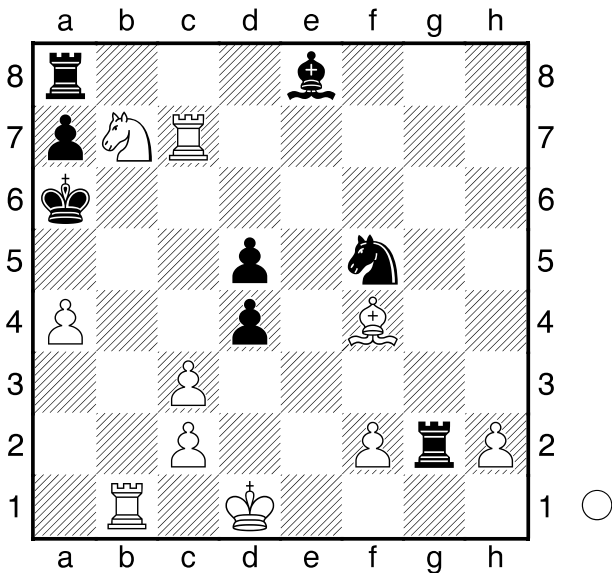
[weniger schwierig]

□ Hübner  
 ■ Penrose



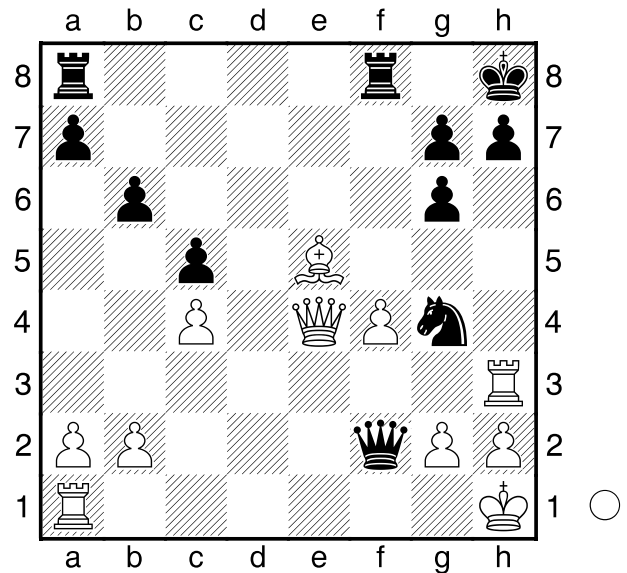
[nicht zu früh aufhören zu rechnen]

□ Ivkov  
 ■ Portisch



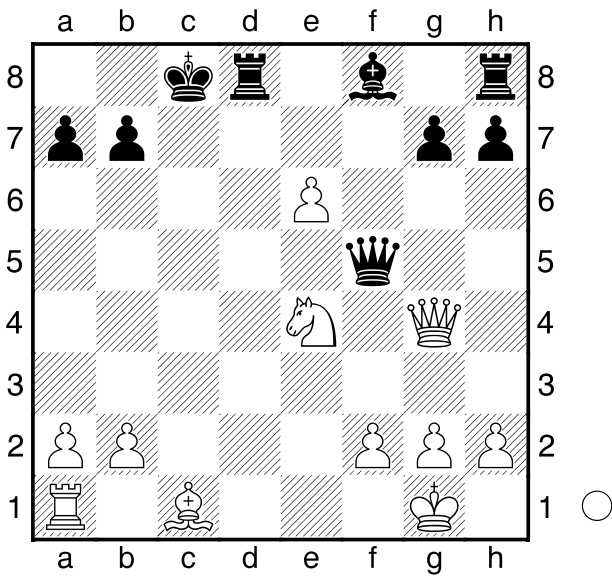
[weniger schwierig]

□ Vaisman  
 ■ Hoxna



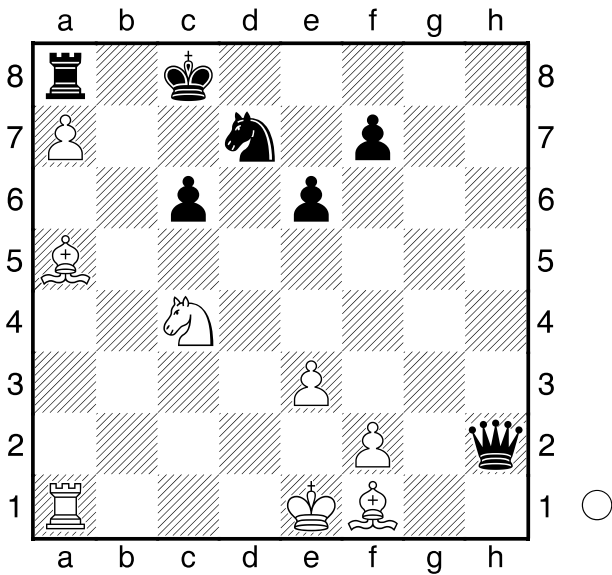
Was zieht Schwarz nach 1.Dxg6?  
 [fieser Trick, weniger schwer]

□ B. Shashin  
 ■ Kolevit



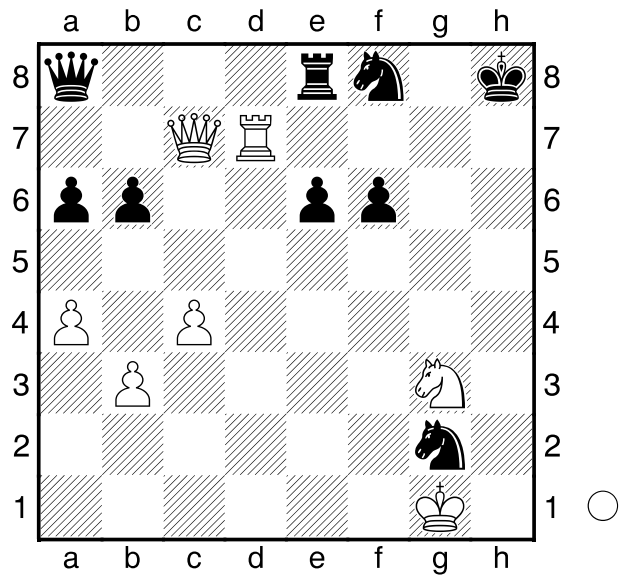
[knifflig]

□ Solmanis  
 ■ Aravin



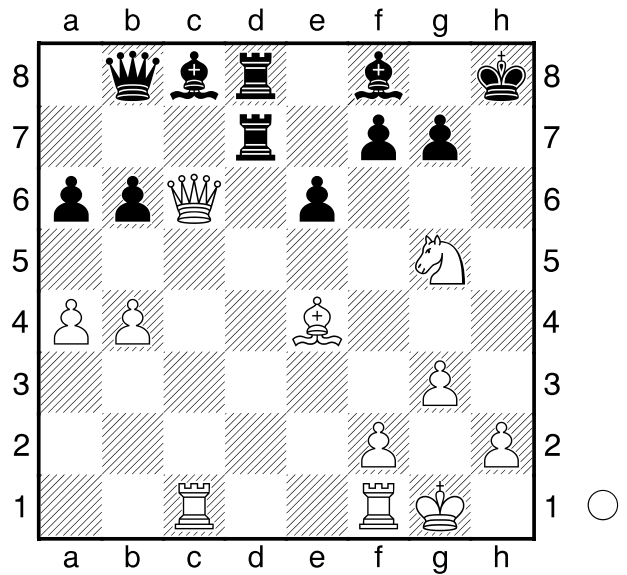
[weniger schwer]

□ Karpov  
 ■ Csom



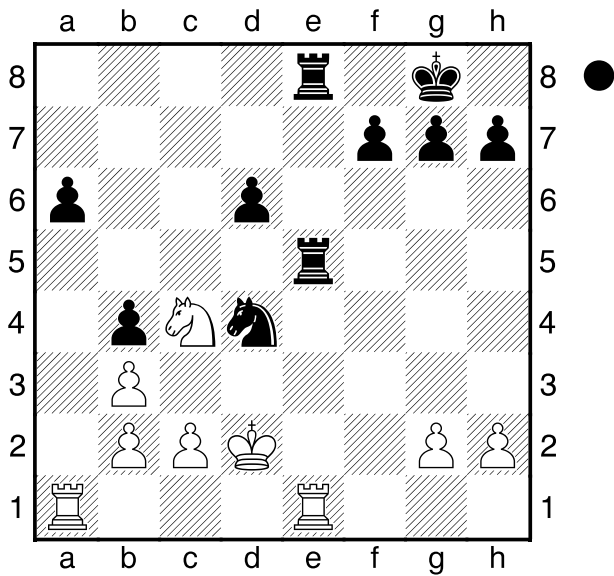
[knifflig]

□ Alekhine  
 ■ Rubinstein



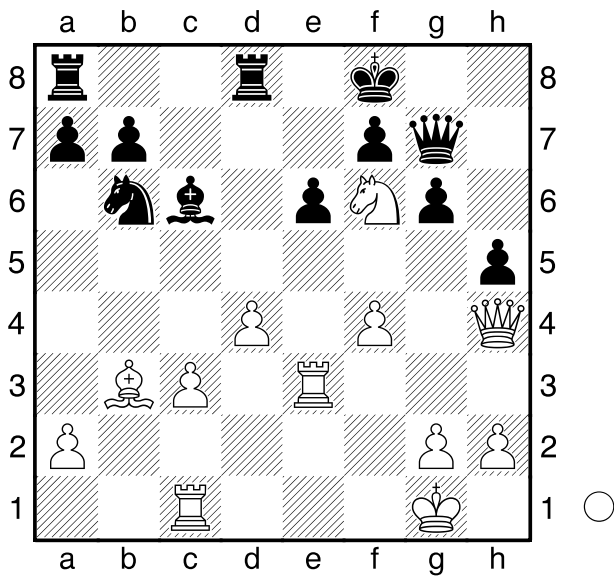
[ziemlich schwer]

☐ Westerinen  
 ■ Larsen



[klare Siegkombination, weniger schwer]

☐ Neishtadt  
 ■ Baranov



[schönes Motiv, schwer!]